



State of New Jersey

2014-15

35-0510-090

OVERVIEW

SOMERSET

BRANCHBURG TWP

GRADE SPAN PK-03

WHITON ELEMENTARY SCHOOL

470 WHITON ROAD

NESHANIC STATION, NJ 08853

The New Jersey Department of Education (NJDOE) is pleased to present these annual reports of School Performance. These reports are designed to inform parents, educators and communities about how well a school is performing and preparing its students for college and careers.

In particular, the School Performance Reports seek to:

- **Focus** attention on metrics that are indicative of college and career readiness.
- **Benchmark** a school's performance against other peer schools that are educating similar students, against statewide outcomes, and against state targets to illuminate and build upon a school's strengths and identify areas for improvement.
- **Improve** educational outcomes for students by providing both longitudinal and growth data so that progress can be measured as part of an individual school's efforts to engage in continuous improvement.

While the New Jersey School Performance Reports seek to bring more information to educators and stakeholders about the performance of schools, they do not seek to distill the performance of schools into a single metric, a single score, or a simplified conclusion. Instead, the intention is that educators and stakeholders will engage in deep, lengthy conversations about the full range of the data presented. As educators know well, measuring school performance is both an art and a science. While the School Performance Report brings attention to important student outcomes, NJDOE does not collect data about other essential elements of a school, such as the provision of opportunities to participate and excel in extracurricular activities; the development of non-cognitive skills like time management and perseverance; the pervasiveness of a positive school culture or climate; or the attainment of other employability and technical skills, as many of these data are beyond both the capacity and resources of schools to measure and collect well.

To learn more about New Jersey's school accountability system, please visit: <http://www.nj.gov/education/educators/>.

DEMOGRAPHIC INFORMATION

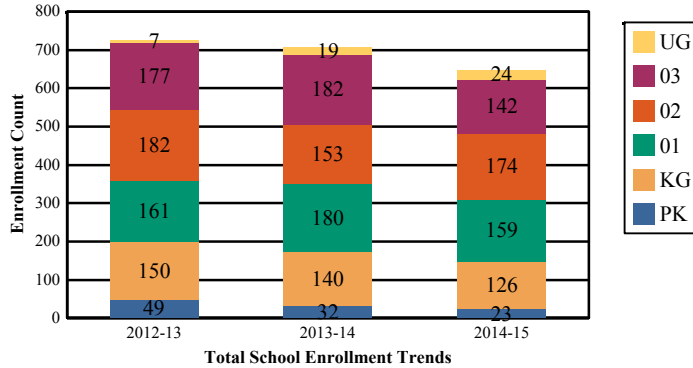
SOMERSET
BRANCHBURG TWP

GRADE SPAN PK-03

35-0510-090
WHITON ELEMENTARY SCHOOL
470 WHITON ROAD
NESHANIC STATION, NJ 08853

Enrollment by Grade

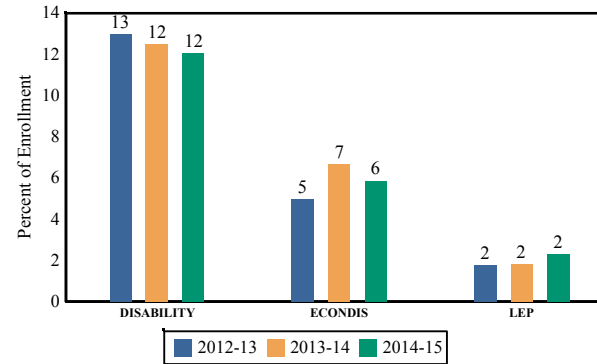
This graph presents the count of students who were 'on roll' by grade in October of each school year.



Note: "UG" represents the count of students who are 'on roll' in this school but who are educated in ungraded classrooms, meaning that the classrooms may contain students from multiple grade levels.

Enrollment Trends by Program Participation

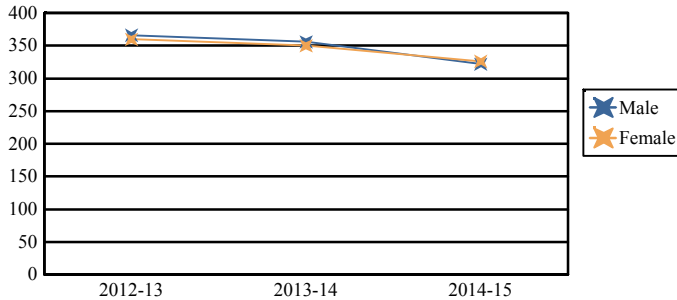
This graph presents the percentages of students by program participation who were 'on roll' in October of each school year.



Total School Enrollment	
2012-13	726
2013-14	706
2014-15	648

Enrollment by Gender

This graph presents the count of students by gender who were 'on roll' in October of each school year.



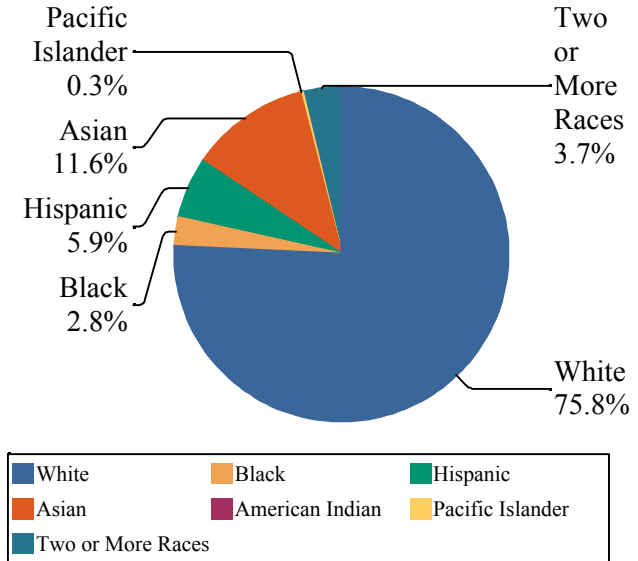
	Male	Female
2012-13	366	360
2013-14	356	350
2014-15	322	326

Current Year Enrollment by Program Participation

2014-15	Count of Students	% of Enrollment
Students with Disability	78	12%
Economically Disadvantaged Students	38	5.9%
English Language Learners	15	2.3%

Enrollment by Ethnic/Racial Subgroup

This graph presents the percentages of enrollment for each subgroup defined by the No Child Left Behind Act of 2001.



Language Diversity

This table presents the percentage of students who primarily speak each language in their home.

2014-15	Percent
English	95.7%
Spanish	1.2%
Chinese	0.9%
Korean	0.3%
Malayalam	0.3%
Mandar	0.3%
Other	1.2%

ACADEMIC ACHIEVEMENT

SOMERSET
BRANCHBURG TWP

GRADE SPAN PK-03

WHITON ELEMENTARY SCHOOL
470 WHITON ROAD
NESHANIC STATION, NJ 08853

The Academic Achievement section measures the content knowledge that students have in English Language Arts/Literacy (ELA/L) and Math as demonstrated in the 2014-2015 *Partnership for Assessment of Readiness for College and Careers* (PARCC) assessments. The below chart consist of three columns. The first column - Schoolwide Performance - includes the percentage of students in ELA/L and Math who met or exceeded grade level expectations. The middle column - Peer School Percentile - indicates how the school's outcomes compared to its peers. The last column - Statewide Percentile - indicates how the school's outcomes compared to schools across the state.

Academic Achievement Indicators	Schoolwide Performance	Peer Percentile	State Percentile
English Language Arts/Literacy Met or Exceeded Expectation	56%	17	55
Math Met or Exceeded Expectation	76%		

ESEA Waiver - English Language Arts/Literacy

This table presents, for each subgroup in the school, the total number of valid test scores, the percentage of students who met or exceeded expectations, the assessment participation goal, and the participation rate. The participation goal is established as 95% by the United States Department of Education.

Subgroups	Valid Scores	% Meeting Standards	Participation Goal	Participation Rate	Met Participation?
Schoolwide	132	56.1%	95%	95.8%	YES
White	105	58.1%	95%	95.5%	YES
African American	-	-	--	--	--
Hispanic	-	-	--	--	--
American Indian	-	-	--	--	--
Asian	-	-	--	--	--
Two or More Races	-	-	--	--	--
Students with Disability	-	-	--	--	--
English Language Learners	-	-	--	--	--
Economically Disadvantaged Students	-	-	--	--	--

YES* = Met Participation Rate (Participation Averaging applied)

Data is presented for subgroups when the count is high enough under ESEA Waiver suppression rules.

ACADEMIC ACHIEVEMENT

SOMERSET
BRANCHBURG TWP

GRADE SPAN PK-03

WHITON ELEMENTARY SCHOOL
470 WHITON ROAD
NESHANIC STATION, NJ 08853

ESEA Waiver - Math

This table presents, for each subgroup in the school, the total number of valid test scores, the percentage of students who met or exceeded expectations, the assessment participation goal, and the participation rate. The participation goal is established as 95% by the United States Department of Education.

Subgroups	Valid Scores	% Meeting Standards	Participation Goal	Participation Rate	Met Participation?
Schoolwide	132	75.8%	95%	95.8%	YES
White	105	80%	95%	95.5%	YES
African American	-	-	--	--	--
Hispanic	-	-	--	--	--
American Indian	-	-	--	--	--
Asian	-	-	--	--	--
Two or More Races	-	-	--	--	--
Students with Disability	-	-	--	--	--
English Learner Students	-	-	--	--	--
Economically Disadvantaged Students	-	-	--	--	--

YES* = Met Participation Rate (Participation Averaging applied)

Data is presented for subgroups when the count is high enough under ESEA Waiver suppression rules.

PARCC Performance Level

The PARCC assesses how well students have learned grade-level material in English Language Arts/Literacy (ELA/L) and Math. The tests include questions that measure students' fundamental skills and knowledge, and require them to think critically, solve problems and support or explain their answers.

The PARCC reports students' overall scale scores that range from 650 to 850. To determine whether students have met academic expectations for their grade level/course in ELA/L and Math, students' overall scale scores are categorized into five Performance Levels. Students performing at levels 4 and 5 (met or exceeded expectations) have demonstrated readiness for the next grade level/course, and are on track for college and careers.

Five Performance Levels				
Level 1: Did Not Yet Meet Expectations <i>(Min. 650)</i>	Level 2: Partially Met Expectations	Level 3: Approached Expectations	Level 4: Met Expectations	Level 5: Exceeded Expectations <i>(Max. 850)</i>

ACADEMIC ACHIEVEMENT

SOMERSET
BRANCHBURG TWP

GRADE SPAN PK-03

WHITON ELEMENTARY SCHOOL
470 WHITON ROAD
NESHANIC STATION, NJ 08853

PARCC ELA Performance Distribution - Grade - 03

This table presents the grade level outcomes, as measured by PARCC, in all five performance levels for all subgroups. PARCC consists of five performance levels: Level 1 - Did not yet meet grade-level expectations, Level 2 -Partially met expectations, Level 3 - Approached expectations, Level 4 - Met expectations, and Level 5 - Exceeded expectations.

Subgroup	Valid Scores	Mean Scale Score	State Mean Scale Score	% Level_1	% Level_2	% Level_3	% Level_4	% Level_5	% Met/ Exceeded Expectation	State % Met/Exceeded Expectation
Schoolwide	132	754	744	4%	14%	26%	54%	2%	56%	44%
White	105	755	753	2%	12%	28%	55%	3%	58%	55%
African American	-	-	725	-	-	-	-	-	-	26%
Hispanic	-	-	727	-	-	-	-	-	-	26%
American Indian	-	-	738	-	-	-	-	-	-	40%
Asian	-	-	769	-	-	-	-	-	-	70%
Two or More Races	-	-	751	-	-	-	-	-	-	53%
Students with Disability	23	734	718	17%	30%	22%	30%	0%	30%	24%
English Language Learners	-	-	709	-	-	-	-	-	-	11%
Economically Disadvantaged Students	-	-	724	-	-	-	-	-	-	24%

ACADEMIC ACHIEVEMENT

SOMERSET
BRANCHBURG TWP

GRADE SPAN PK-03

WHITON ELEMENTARY SCHOOL
470 WHITON ROAD
NESHANIC STATION, NJ 08853

PARCC MATH - Performance Distribution - Grade - 03

This table presents the grade level outcomes, as measured by PARCC, in all five performance levels for all subgroups. PARCC consists of five performance levels: Level 1 - Did not yet meet grade-level expectations, Level 2 -Partially met expectations, Level 3 - Approached expectations, Level 4 - Met expectations, and Level 5 - Exceeded expectations.

Subgroup	Valid Scores	Mean Scale Score	State Mean Scale Score	% Level_1	% Level_2	% Level_3	% Level_4	% Level_5	% Met/ Exceeded Expectation	State % Met/Exceeded Expectation
Schoolwide	132	763	746	5%	7%	13%	59%	17%	76%	46%
White	105	766	752	3%	6%	11%	64%	16%	80%	56%
African American	-	-	728	-	-	-	-	-	-	25%
Hispanic	-	-	733	-	-	-	-	-	-	28%
American Indian	-	-	742	-	-	-	-	-	-	41%
Asian	-	-	772	-	-	-	-	-	-	77%
Two or More Races	-	-	751	-	-	-	-	-	-	54%
Students with Disability	23	741	727	22%	17%	13%	35%	13%	48%	27%
English Language Learners	-	-	724	-	-	-	-	-	-	17%
Economically Disadvantaged Students	-	-	730	-	-	-	-	-	-	26%

2015 National Assessment Educational Progress (NAEP)

The National Assessment of Educational Progress (NAEP) is the largest national assessment of what our nation's students know and can do. NAEP assesses fourth-, eighth-, and twelfth-grade students in subjects such as reading, mathematics, science, and writing. The reporting of NAEP scores on state report cards is a federal mandate. The results of NAEP are also published as the Nation's Report Card, and are available for the nation, states, and, in some cases, urban districts. The NAEP scores on the report card include grades four and eight 2015 reading and math scores for New Jersey which are the last scores published.

For subgroup outcomes, visit:

- Reading Grade 4 <http://www.nj.gov/education/pr/1415/naep/naep4read.html>
- Reading Grade 8 <http://www.nj.gov/education/pr/1415/naep/naep8read.html>
- Math Grade 4 <http://www.nj.gov/education/pr/1415/naep/naep4math.html>
- Math Grade 8 <http://www.nj.gov/education/pr/1415/naep/naep8math.html>

For more information, visit <http://nces.ed.gov/nationsreportcard/>

Proficiency Percentages

Subject	Grade	State/Nation	Below Basic	Basic	Proficient	Advanced
Reading	Grade 4	State (NJ)	25	33	31	12
	Grade 4	Nation	31	33	27	9
	Grade 8	State (NJ)	20	39	35	6
	Grade 8	Nation	24	42	31	4
Math	Grade 4	State (NJ)	14	39	38	9
	Grade 4	Nation	18	42	33	7
	Grade 8	State (NJ)	21	32	30	16
	Grade 8	Nation	29	38	25	8

COLLEGE AND CAREER READINESS

SOMERSET
BRANCHBURG TWP

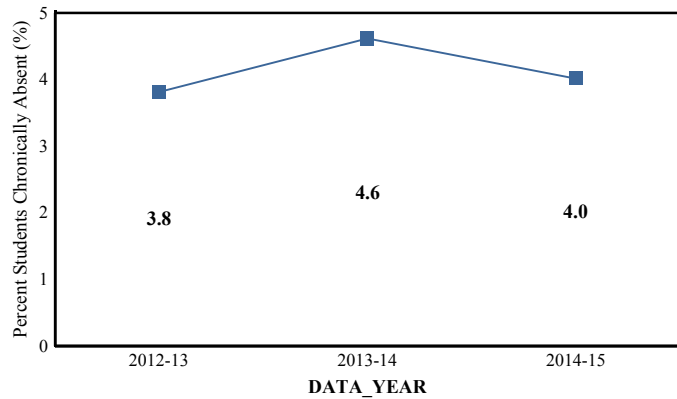
WHITON ELEMENTARY SCHOOL
470 WHITON ROAD
NESHANIC STATION, NJ 08853

GRADE SPAN PK-03

Students in both elementary and middle schools begin to demonstrate college readiness behaviors long before they even enter high school. Among the behaviors that research has shown to be indicative of successfully graduating high school is regularly attending school. For all elementary schools, this includes the percentage of students that are chronically absent each year, defined as missing more than 10% of possible school days.

Chronic Absenteeism Trend

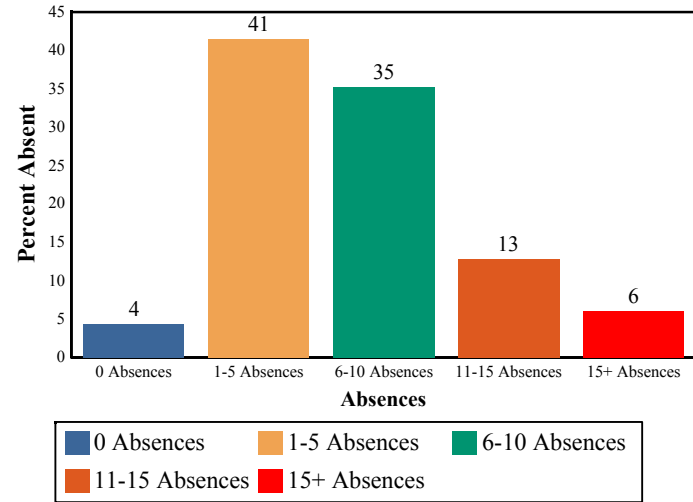
This graph presents the percentage of the enrolled students who were chronically absent for the past three years.



Chronic Absenteeism for 2014-15	4.02%
--	--------------

Absenteeism

The chart below presents the percentage of students who were absent in each category of absence: 0 absences, 1- 5 absences, 6 - 10 absences, 11 - 15 absences, and more than 15 absences. An absence is defined as being ‘not present’ and includes the days missed regardless of whether they were determined to be excused or unexcused by the school.



WITHIN SCHOOL ACHIEVEMENT GAP

WHITON ELEMENTARY SCHOOL
470 WHITON ROAD
NESHANIC STATION, NJ 08853

SOMERSET
BRANCHBURG TWP

GRADE SPAN PK-03

This section of the performance report presents data about the achievement gap that exists within a school - as measured by the difference between the students' scale scores at the 25th and 75th percentile in the school, the Interquartile Range (IQR). Taken together with an understanding of the overall and average achievement levels in the school, the IQR furthers an understanding of the range of student outcomes that exist in a school. A school gap smaller than the state gap indicates that the school's range of student outcomes is narrower than the state's while a school gap larger than the state gap indicates that the school's range of student outcomes is broader than the state's.

Grade Level - 03

Grade Level - 03

PARCC Language Arts 25th %ile vs 75th%ile

PARCC MATH 25th %ile vs 75th%ile

This table presents the scale scores associated with students at the bottom (0th percentile), the 25th percentile, the 50th percentile, the 75th percentile and the top (99th percentile) of school's distribution.

This table presents the scale scores associated with students at the bottom (0th percentile), the 25th percentile, the 50th percentile, the 75th percentile and the top (99th percentile) of school's distribution.

Percentile	School Scale Score	State Scale Score
99th	815	850
75th	776	770
50th	756	743
25th	733	715
0th	674	650

Percentile	School Scale Score	State Scale Score
99th	830	850
75th	783	767
50th	768	745
25th	750	722
0th	650	650

	Scale Score Gap - School	Scale Score Gap - State
25th vs 75th Gap	43	55

	Scale Score Gap - School	Scale Score Gap - State
25th vs 75th Gap	33	45

SCHOOL CLIMATE

SOMERSET

BRANCHBURG TWP

GRADE SPAN PK-03

Length of School Day

This table presents the amount of time a school is in session for a typical student on a normal school day.

	School
2014-15	6 Hrs. 50 Mins.

Student Suspension Rate

This table presents the percentage of students who were suspended one or more times during the school year.

	School
2014-15	0.0%

Instructional Time

This table presents the amount of time that a typical student is engaged in instructional activities under the supervision of a certified teacher.

2014-15	School
Full Time	5 Hrs. 50 Mins.
Shared Time	0 Hrs. 0 Mins.

Student Expulsions

This table presents the number of students who were expelled from the school and district during the school year.

	School
2014-15	0

Student to Staff Ratio

This table presents the count of students per faculty member or administrator in the school. All staff are counted in full-time equivalents.

2014-15	School
Faculty	11
Administrators	324

SCHOOL PEER GROUP

SOMERSET

BRANCHBURG TWP

GRADE SPAN PK-03

WHITON ELEMENTARY SCHOOL

470 WHITON ROAD

NESHANIC STATION, NJ 08853

This table presents the list of peer schools in alphabetical order by county name that was created specifically for this school (highlighted in yellow). Peer schools are drawn from across the state and represent schools that have similar grade configurations and that are educating students of similar demographic characteristics, as measured by enrollment in Free/Reduced Lunch Programs, Limited English Proficiency or Special Education Programs.

<u>COUNTY NAME</u>	<u>DISTRICT NAME</u>	<u>SCHOOL NAME</u>	<u>CDS CODE</u>	<u>GRADES PAN</u>	<u>ECONOMICALLY DISADVANTAGED</u>	<u>ENGLISH LANGUAGE LEARNERS</u>	<u>SPECIAL EDUCATION</u>
BERGEN	EMERSON BORO	PATRICK M VILLANO SCHOOL	03-1360-060	03-06	8.1%	5.1%	17.6%
BERGEN	FAIR LAWN BORO	HENRY B. MILNES ELEMENTARY SCHOOL	03-1450-080	KG-05	9.4%	7.7%	17.5%
BERGEN	PARAMUS BORO	PARKWAY ELEMENTARY SCHOOL	03-3930-100	PK-04	5.8%	1.9%	15.1%
BERGEN	RAMSEY BORO	WESLEY D TISDALE ELEMENTARY SCHOOL	03-4310-080	PK-03	6.9%	4.1%	6.4%
BERGEN	RUTHERFORD BORO	LINCOLN SCHOOL	03-4600-070	KG-03	4.6%	0.2%	5.7%
BERGEN	WESTWOOD REGIONAL	JESSIE F. GEORGE ELEMENTARY	03-5755-065	KG-05	4.4%	0%	15.3%
CAMDEN	HADDON HEIGHTS BORO	ATLANTIC AVE	07-1880-080	KG-06	5.2%	1.3%	16.8%
CAMDEN	HADDON HEIGHTS BORO	SEVENTH AVE	07-1880-090	KG-06	4.6%	0%	9.1%
CAMDEN	VOORHEES TWP	EDWARD T. HAMILTON	07-5400-020	KG-05	5.5%	1.2%	18.4%
CAMDEN	VOORHEES TWP	KRESSON SCHOOL	07-5400-055	KG-05	4.6%	0%	9.3%
CHARTERS	THOMAS EDISON ENERGYSMART CS	THOMAS EDISON ENERGYSMART CHARTER SCHOOL	80-6081-967	KG-06	5.7%	2.4%	2.7%
ESSEX	NUTLEY TOWN	RADCLIFFE SCHOOL	13-3750-080	PK-06	5.4%	1.8%	17.1%
HUNTERDON	CLINTON TWP	PATRICK MCGAHERAN	19-0920-035	02-03	4.8%	0.3%	17.1%
HUNTERDON	READINGTON TWP	HOLLAND BROOK SCHOOL	19-4350-030	04-05	5.8%	1.1%	21.6%
MERCER	W WINDSOR-PLAINSBORO REG	TOWN CENTER ELEMENTARY SCHOOL AT PLAINSBORO	21-5715-130	PK-03	8.7%	7%	6.2%
MIDDLESEX	EAST BRUNSWICK TWP	FROST ELEMENTARY SCHOOL	23-1170-130	KG-05	7.3%	4.9%	8.2%
MIDDLESEX	MILLTOWN BORO	PARKVIEW SCHOOL	23-3220-060	PK-03	6%	2.9%	11.2%
MONMOUTH	HOLMDEL TWP	INDIAN HILL SCHOOL	25-2230-050	04-06	4.4%	0.6%	13.8%
MONMOUTH	MARLBORO TWP	ROBERTSVILLE ELEMENTARY SCHOOL	25-3030-060	01-05	8.5%	6.3%	17.8%
MONMOUTH	MIDDLETOWN TWP	RIVER PLAZA ELEMENTARY SCHOOL	25-3160-160	KG-05	4.9%	0.6%	11.1%
MORRIS	PARSIPPANY-TROY HILLS TWP	MOUNT TABOR ELEMENTARY SCHOOL	27-3950-100	KG-05	7.5%	4.1%	12.9%
MORRIS	RANDOLPH TWP	CENTER GROVE SCHOOL	27-4330-057	PK-05	5%	1%	13.7%

SCHOOL PEER GROUP

SOMERSET

BRANCHBURG TWP

GRADE SPAN PK-03

WHITON ELEMENTARY SCHOOL
470 WHITON ROAD
NESHANIC STATION, NJ 08853

PASSAIC	WAYNE TWP	ALBERT PAYSON TERHUNE ELEMENTARY	31-5570-078	KG-05	5.1%	0.5%	12.4%
PASSAIC	WAYNE TWP	THEUNIS DEY ELEMENTARY SCHOOL	31-5570-150	KG-05	4.1%	0%	12.2%
SOMERSET	BRANCHBURG TWP	WHITON ELEMENTARY SCHOOL	35-0510-090	PK-03	5.9%	2.3%	9.1%
SOMERSET	BRIDGEWATER-RARITAN REG	MILLTOWN ELEMENTARY SCHOOL	35-0555-085	KG-04	4.7%	0%	11.2%
UNION	CRANFORD TWP	LIVINGSTON AVENUE SCHOOL	39-0980-080	03-05	5.1%	0%	24.6%
UNION	NEW PROVIDENCE BORO	SALT BROOK SCHOOL	39-3560-090	KG-06	4.8%	0.8%	10%
UNION	SCOTCH PLAINS-FANWOOD REG	J. ACKERMAN COLES	39-4670-085	PK-04	4.4%	0%	12.5%
UNION	SUMMIT CITY	LINCOLN-HUBBARD ELEMENTARY SCHOOL	39-5090-100	01-05	7.3%	4%	7.6%
UNION	WESTFIELD TOWN	MCKINLEY ELEMENTARY SCHOOL	39-5730-140	01-05	7%	3.2%	18.3%